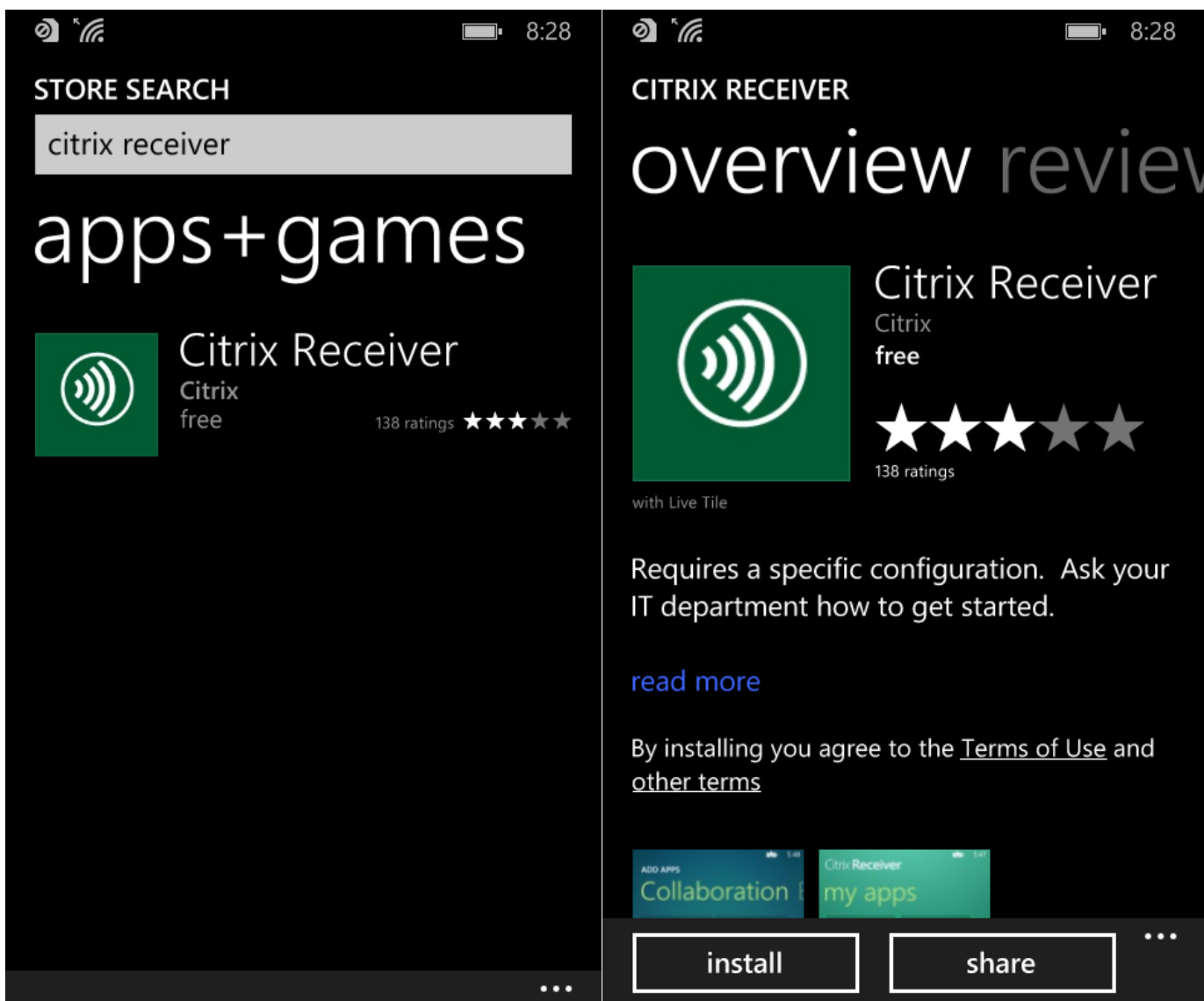


How to Install UCF Apps

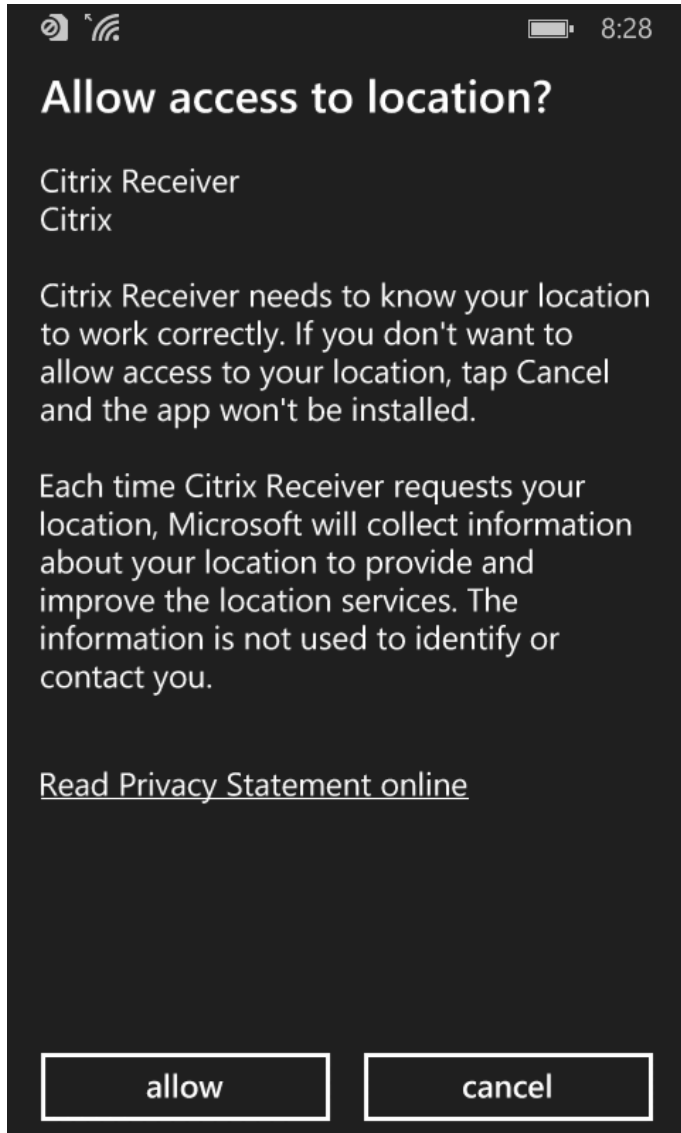
(Windows Phone)

Go to the Store and search for the Citrix Receiver.

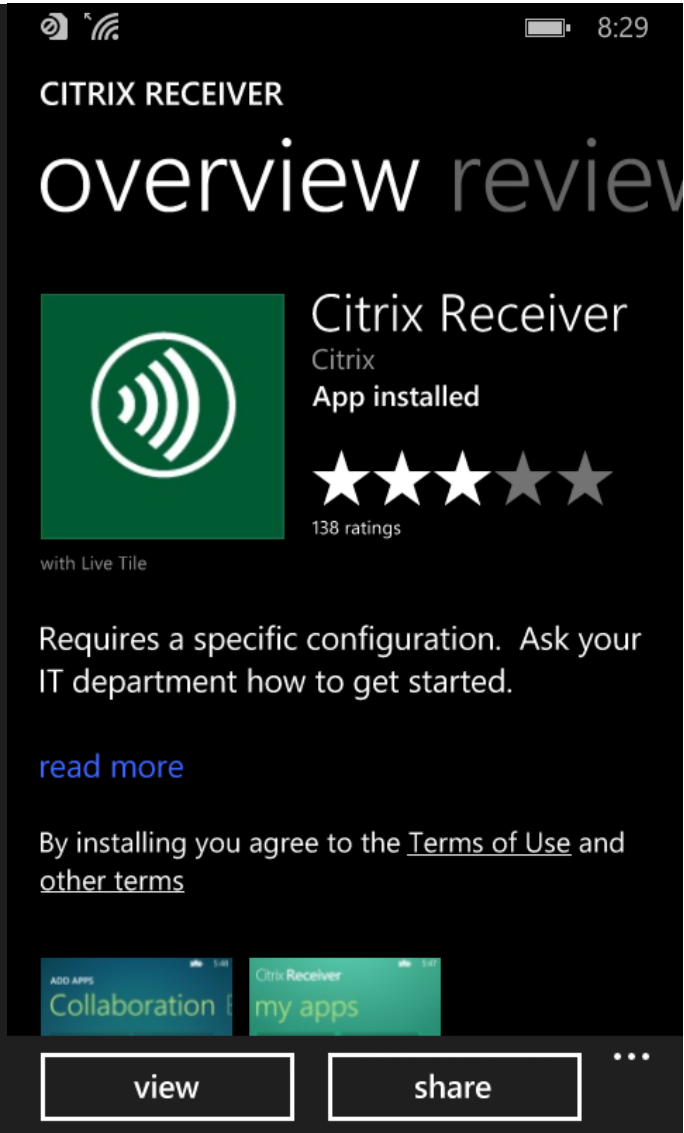
Click install.



Click "Allow".

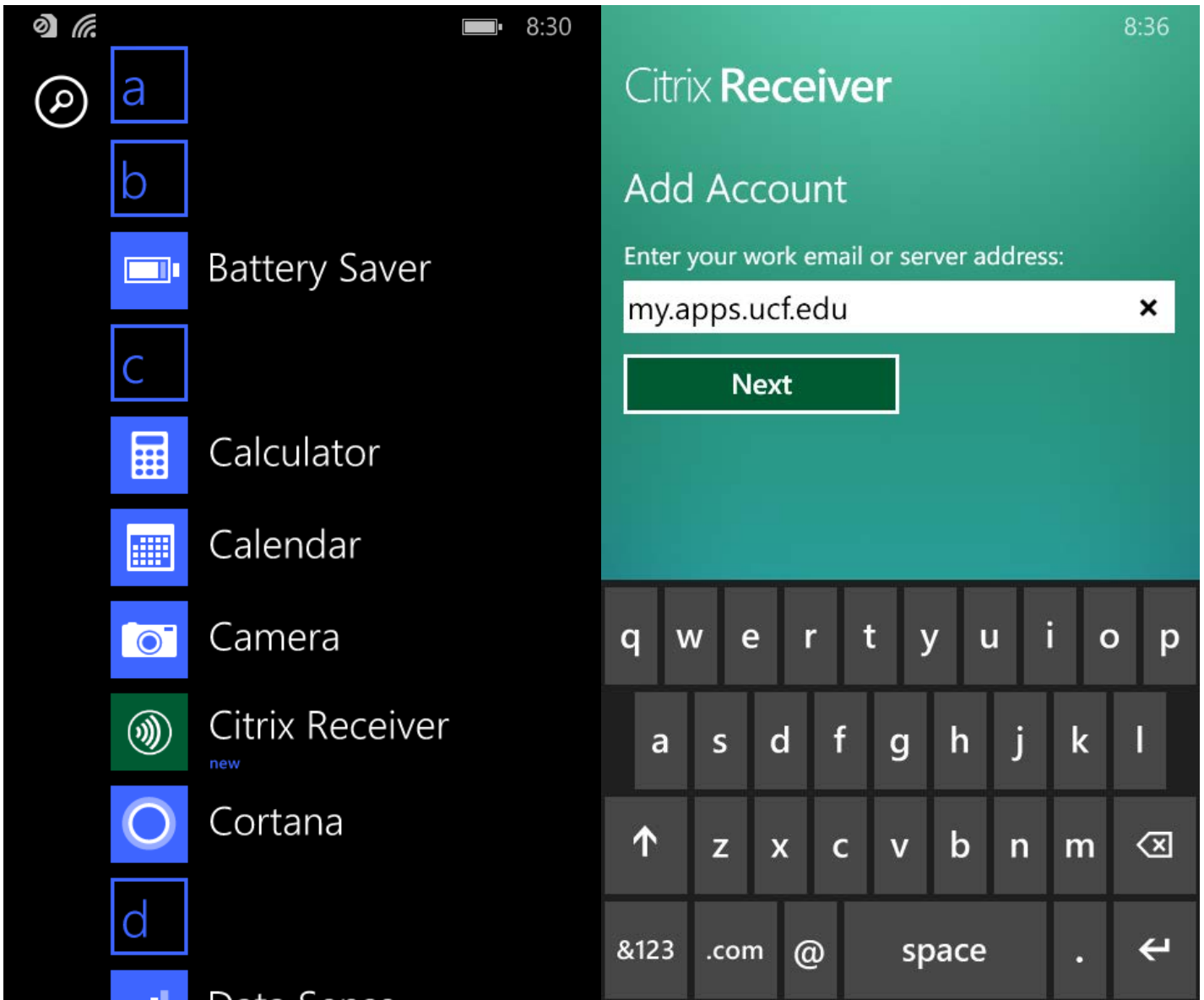


Click "View" to verify the Receiver shows up.



Click on the Citrix Receiver.

Type my.apps.ucf.edu and click "Next".



Type in your NID and NID Password. Click "Log On".

Click on the app you want to use and it will open.

The image shows two side-by-side screenshots of the Citrix Receiver interface. The left screenshot, timestamped 8:37, displays the login screen. It features the 'Citrix Receiver' logo at the top left, a 'Log On' heading, and two input fields: 'User name:' containing 'NID' and 'Password:' containing 'NID Password'. A 'Log On' button is highlighted with a white border. The right screenshot, timestamped 8:38, shows the 'my apps' dashboard. It features the 'Citrix Receiver' logo at the top left and the text 'my apps' in a large, light green font. Below this, four application tiles are displayed in a 2x2 grid, each with a green border: 'Google Chrome' (with the Chrome logo), 'Word 2013' (with the Word logo), 'ArcMap 101' (with a globe and magnifying glass icon), and 'Rhinoceros 40' (with a rhinoceros icon). At the bottom of the interface, there is a dark navigation bar with a search icon, a plus icon, and a three-dot menu icon.